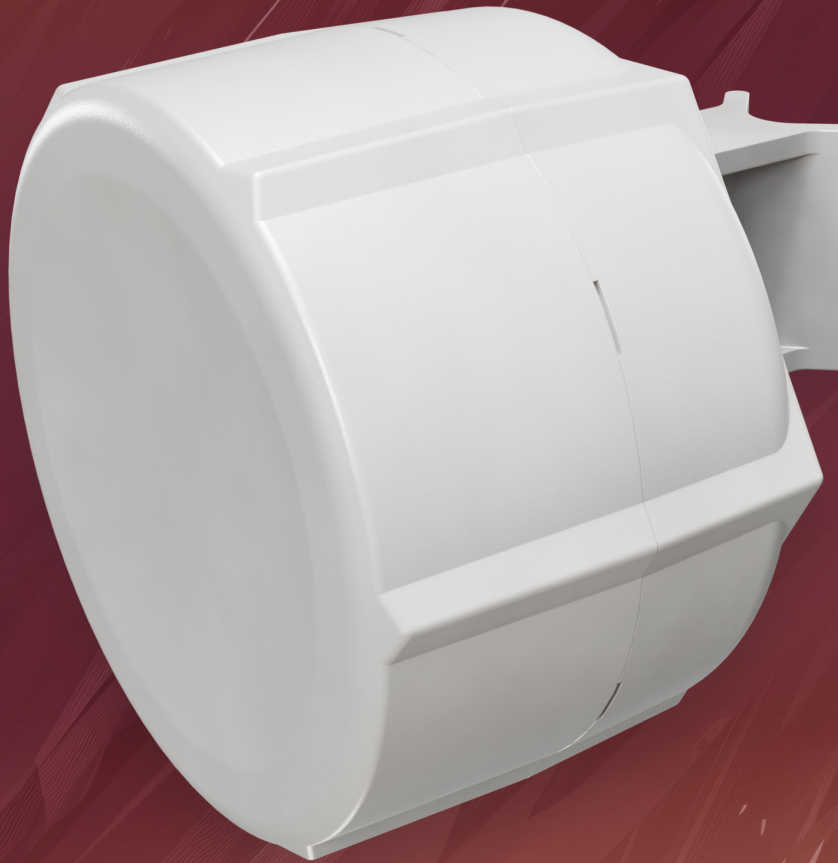




SXT LTE7 kit

Reliable connectivity in remote areas.

A rugged outdoor LTE CPE with the new R11e-LTE7 modem inside.
Delivers stable, fast Internet where phones fail – ideal for farms,
off-grid connections, and countryside estates.



CARRIER AGGREGATION
FOR A BETTER SIGNAL!



ROUTEROS V7



OUR LATEST
CAT7 LTE MODEM



2X2 MIMO DL



CONNECT EVEN WHERE
YOUR PHONE FAILS!



2X ETHERNET
PORTS



EXPANDED
FREQUENCY SUPPORT
(B28 & B32)



POE-IN &
POE-OUT

The SXT LTE7 kit is a rugged, outdoor LTE access point designed for remote and hard-to-reach locations that are still within cellular network coverage. It keeps the **same trusted SXT enclosure** that has proven itself in thousands of deployments worldwide – but now features a **faster LTE Category 7 modem**, delivering higher speeds, better stability, and improved performance in crowded or rural LTE networks.

Mount it outside, point it at the nearest tower, and always stay connected!



The classic SXT – now even faster!

SXT has always been about reliable connectivity with minimal visual impact:

- Weatherproof/Snow-resistant
- Unobtrusive, durable and discreet
- Designed to attract less unwanted attention

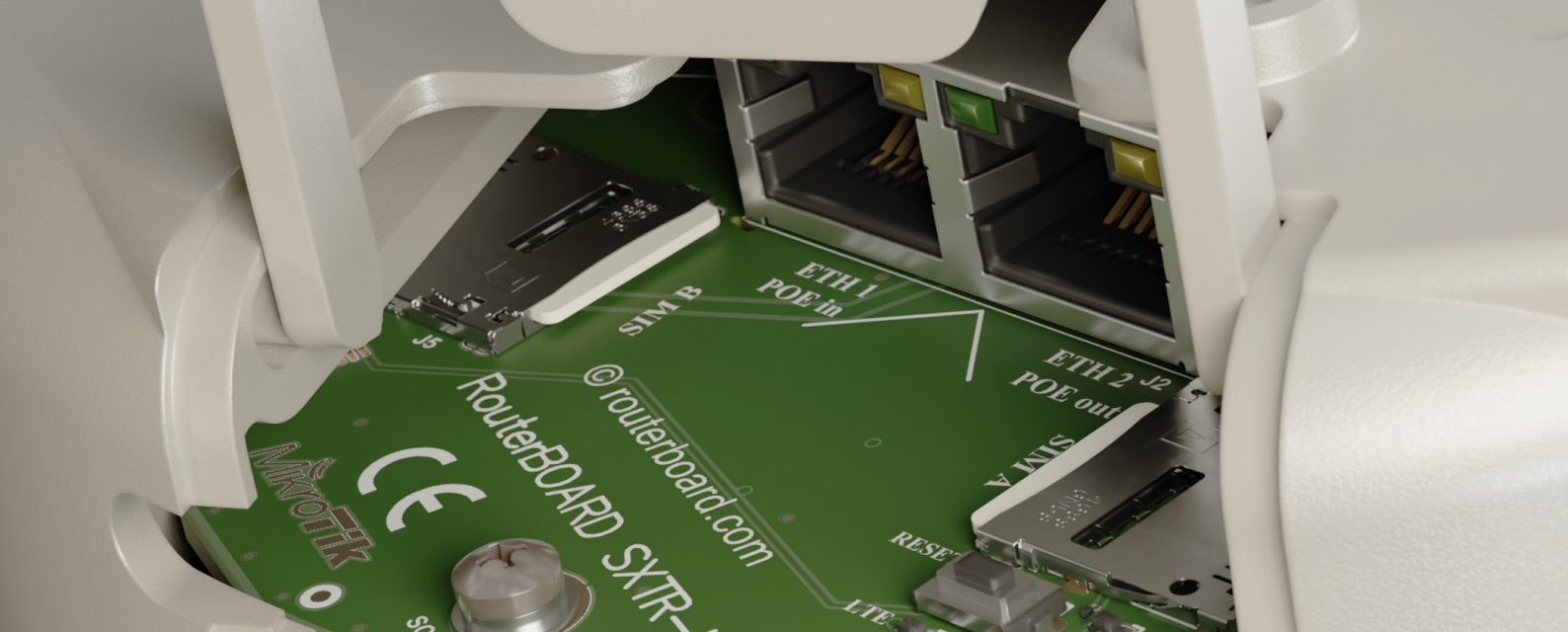
The SXT LTE7 kit keeps everything that made the platform popular – and upgrades what matters most: mobile performance.

With LTE Category 7, you get **faster uploads, better responsiveness**, and stronger connections without changing your installation or setup.

Why Upgrade to CAT7

- ✓ Twice the upload speed*
- ✓ Expanded frequency support – now includes Band 32 (1500 MHz) for even better performance in congested areas.
- ✓ Same trusted design – no changes to installation or configuration.
- ✓ Lower cost – better connectivity that actually costs less, especially on volume orders.

** Depending on the LTE tower infrastructure and other variables.*



We've included **two Micro-SIM slots** – for backup. It never hurts to have extra options when it comes to mobile network coverage. Also, the Category 7 LTE modem enables **carrier aggregation**, allowing SXT to use multiple LTE bands simultaneously. That's a huge advantage when there are a lot of mobile users in the area. It offers better responsiveness in a crowded environment. And higher efficiency for weaker signal situations in the countryside. Win-win! We have seen Internet speed doubling in rural areas after switching to carrier aggregation, so there is no need to wait for cable network expansions.

The unit is equipped with **two Ethernet ports** and PoE functionality: **PoE-in on Ether1, PoE-out on Ether2**. That means **SXT can power other devices or be powered by other devices**, making your cable management so much easier!

Unit is shipped with a 24 V power supply, but can support a wide range of 12-57 V and is 802.3af/at compliant.



• Specifications

Product code	SXTR&R11e-LTE7
CPU	QCA9531 650 MHz
CPU architecture	MIPSBE
Size of RAM	64 MB
RAM type	DDR2
Storage	16 MB Flash
Number of 100M Ethernet ports	2
MiniPCIe slots	1
Switch chip model	QCA9531
LTE modem	R11e-LTE7
TAC	35312597
LTE Category	7 (DL: 300 Mbps; UL: 100 Mbps)
MIMO DL	2x2
MIMO UL	1x1
LTE FDD bands	1 (2100 MHz) / 3 (1800 MHz) / 5 (850 MHz) / 7 (2600 MHz) / 8 (900 MHz) / 20 (800 MHz) / 28 (700 MHz) / 32 (1500 MHz)
LTE TDD bands	38 (2600 MHz) / 40 (2300 MHz) / 41 (2500 MHz)
3G Category	R8 (DL: 42.2 Mbps; UL: 5.76 Mbps)
3G bands	1 (2100 MHz) / 3 (1800 MHz) / 5 (850 MHz) / 8 (900 MHz)
Dimensions	140 x 140 x 56 mm
Operating system	RouterOS v7, License level 3
Operating temperature	-40°C to +60°C

• Powering

DC input	PoE-In
PoE-In input Voltage	12-57 V
Power adapter nominal voltage	24 V
Power adapter nominal current	1.2 A
PoE-in	802.3af/at
PoE-Out	Passive PoE up to 57V (Ether2)
Max power consumption without attachments	7 W
Max power consumption	24 W

• Supported 2xCA combinations

B1+B1/3/5/7/8/20/28/32/40/41 (100MHz)	B20+B1/3/7/32/38/40
B3+B1/3/5/7/8/20/28/32/40/41 (100MHz)	B28+B1/3/5/7/32
B5+B1/3/5/7/28/40/41 (100MHz)	B38+B38
B7+B1/3/5/8/20/28	B40+B40
B8+B1/3/7/20/32/40/41 (100MHz)	B41+B41 (100MHz)

• Supported 2×CA (UL) LTE bands (Intra-band contiguous only)

B1+B1	B8+B8
B3+B3	B38+B38
B5+B5	B40+B40
B7+B7	B41+B41

• Included parts



24 V 1.2 A
power adapter



Gigabit PoE
injector



Metal ring



Pole mounting
bracket



Elastic thermal
pad